

STUDY UK VIRTUAL SCHOOLS AND COLLEGES FAIR HANDBOOK 2021

THE BEST POSSIBLE



Sponsored by Student
Accommodation in the UK:





CONTENTS

4-5 Seminar programmes

6 Institution profile

7 Brooke House College

8 Cardiff Sixth Form College

9 Cognita Schools

10 d'Overbroeck's & Oxford Sixth Form College

11 INTO University Partnerships

12 Norwich School

13 Queen Ethelburga's College

14 TASIS The American School in England

15 Westbourne School

16 Student accommodation in the UK - VITA STUDENT

SEMINAR PROGRAMME

THURSDAY 7 OCTOBER 2021

Time					Programme
UK	Myanmar	Indonesia (Jakarta) Thailand Vietnam	China Hong Kong SAR Malaysia Singapore	Japan	
11.30 11.35	17.00 17.05	17.30 17.35	18.30 18.35	19.30 19.35	Opening
11.35 11.55	17.05 17.25	17.35 17.55	18.35 18.55	19.35 19.55	Session 1 - How to choose the “right” UK Boarding School? by Mark Bruce, Queen Ethelburga’s Collegiate
11.55 12.15	17.25 17.45	17.55 18.15	18.55 19.15	19.55 20.15	Session 2 - Preparing for life at boarding school away from home by Joshua Clark, TASIS The American School in England
12.15 12.35	17.45 18.05	18.15 18.35	19.15 19.35	20.15 20.35	Session 3 - Important tips for studying at a day school by Neil Herrington, Cognita Schools
12.35 12.55	18.05 18.25	18.35 18.55	19.35 19.55	20.35 20.55	Session 4 - Prepare your child to a top ranking university by Susan Tester Jones, Westbourne School
12.55 13.10	18.25 18.40	18.55 19.10	19.55 20.10	20.55 21.10	Session 5 - How do international students choose accommodation in the UK? by Max Bielby, Vita Student
13.10 13.30	18.40 19.00	19.10 19.30	20.10 20.30	21.10 21.30	Breakout rooms for Q&A

FRIDAY 8 OCTOBER 2021

Time					Programme
UK	Myanmar	Indonesia (Jakarta) Thailand Vietnam	China Hong Kong SAR Malaysia Singapore	Japan	
11.30 11.35	17.00 17.05	17.30 17.35	18.30 18.35	19.30 19.35	Opening
11.35 11.55	17.05 17.25	17.35 17.55	18.35 18.55	19.35 19.55	Session 6 - How to choose the "right" UK Boarding School? by Sitang Chanakul, d'Overbroeck's and Oxford Sixth Form College
11.55 12.15	17.25 17.45	17.55 18.15	18.55 19.15	19.55 20.15	Session 7 - Difference between day school and boarding school by Carolyn Blackshaw, Brooke House College
12.15 12.35	17.45 18.05	18.15 18.35	19.15 19.35	20.15 20.35	Session 8 - Preparation for successful entry into Medical School by Tony Blignaut, Cardiff Sixth Form College
12.35 12.55	18.05 18.25	18.35 18.55	19.35 19.55	20.35 20.55	Session 9 - How to choose GCSEs and A Levels by Will Croston, Norwich School
12.55 13.15	18.25 18.45	18.55 19.15	19.55 20.15	20.55 21.15	Session 10 - What sort of skill are school looking for and scholarship opportunities in the UK by Ae Jutamat Hempunpairoh, INTO University Partnerships
13.15 13.30	18.45 19.00	19.15 19.30	20.15 20.30	21.15 21.30	Breakout rooms for Q&A

SATURDAY 9 OCTOBER 2021

Time					Programme
UK	Myanmar	Indonesia (Jakarta) Thailand Vietnam	China Hong Kong SAR Malaysia Singapore	Japan	
07.00 10.00	12.30 15.30	13.00 16.00	14.00 17.00	15.00 18.00	pre-booked one-to-one meeting (15 minutes each)

LIST OF INSTITUTIONS

- Brooke House College
- Cardiff Sixth Form College
- Cognita Schools
- d'Overbroeck's & Oxford Sixth Form College
- INTO University Partnerships
- Norwich School
- Queen Ethelburga's College
- TASIS The American School in England
- Westbourne School
- Student Accommodation in the UK: VITA STUDENT

INSTITUTION PROFILE





BROOKE HOUSE COLLEGE

 c.blackshaw@brookehouse.com

 www.brookehousecollege.co.uk

Location

MARKET HARBOROUGH LEICESTERSHIRE IS 55 MINUTES NORTH OF LONDON ON THE TRAIN IN THE HEART OF ENGLAND

Brooke House College is an international independent college for students (aged 11-19) wishing to undertake general education within a British curriculum: Key Stage 3, GCSEs, A-Levels and University Foundation Programme, with a large range of academic subject choice, all supported with English and IELTS preparation classes. Brooke House College also has a successful Football Academy and Motorsport programme giving students the option to develop their sporting interest alongside their academic achievements and has an English Summer programme (July and August) for ages 10-17. A family run, friendly, caring, co-educational college who work closely with students to achieve their full potential, desired goals and progress to

excellent UK and worldwide Universities, many listed in the top 25 University list and/or Russell Group Universities. With over 250 students, studying in an average class size of 8, allows for high level of personal academic and pastoral attention.

Age range

11-19

School type

Independent school, Co-ed

Accommodation

Boarding

Annual tuition fee (GBP)

£37,000-£39,900

Courses

Secondary, GCSE, GCE A-level, Access/Foundation course, Summer English, ESL Support

Total number of students

250

Number of Hong Kong students

5



CARDIFF SIXTH FORM COLLEGE

 admissions@ccoex.com

 www.ccoex.com

Location

Cardiff, Wales

Cardiff Sixth Form College has recorded some more excellent results in 2021, making it again top of the league tables in the UK, with 98% of students gaining A*-A grades and a staggering 100% gaining A*-B grades. 88% of students went onto QS Top 100 universities in 2021 with 75% gaining places at Russell Group universities in the UK and others going onto leading universities in Hong Kong, the US and Australia. 39 students went onto study medicine, 29 engineering and architecture, 25 economics, business, finance and management and 11 law.

At GCSE the leading college has seen 90.3% of students gaining all A*-A grades and was top of the small schools league tables in 2019, the last time league tables were published due to Covid19. **Exciting news is that a new two year GCSE programme is being launched at the college from September 2022 which is**

designed as a four year preparation into top universities and incorporates work placement programmes, careers guidance, careers-based societies, awards and preliminary UCAS preparation. Students can take up to 11 subjects for GCSE and as well have a full extra-curricular programme of sport, music, art and drama as well as a wide variety of clubs and societies. A new GCSE boarding area has been set up with extra support for homework and study skills.

The College has also announced plans for a new campus in the beautiful university city of Cambridge which will also start in September 2022 for A Level students. A new academic building is under refurbishment and stunning new single ensuite boarding rooms will ensure Cardiff Sixth Form College students have all the peace and comfort needed.

The careers team at Cardiff offer advice and help right through the UCAS process including guidance on choosing the right university and course, interview technique, personal statements and university admissions test guidance. There is an extensive work experience programme in not only the UK but also Tanzania, Malaysia, India and Europe, a wide extra-curricular programme and excellent annual events including The Cultural Event, Sports Day, theatre production and Talent Show. Boarding at Cardiff is university-style – modern single ensuite bedrooms right in the heart of the capital city of Cardiff with all the amenities of shopping, restaurants, culture and history. Cardiff is only 2.5 hours from London Heathrow Airport and is on all major transport links.

Age range

14-19

School type

Senior and sixth form, co-ed

Accommodation

Boarding

Annual tuition fee (GBP)

£46,900 per annum

Courses

GCSE and A Level

Total number of students

373

Number of Hong Kong students

We have students from 42 different countries - a large amount of students are from Hong Kong

Teacher student ratio

1:7



COGNITA

COGNITA SCHOOLS

 international.admissions@cognita.com

 www.cognita.com

Location

London, Bedfordshire, Berkshire, Buckinghamshire, Devon, Essex, Hampshire, Hertfordshire, Kent, Northamptonshire, Oxfordshire, Surrey, Wales, West Midlands, Yorkshire

Cognita is a global private schools group headquartered in the UK that owns and operates 85+ schools around the world, including 29 in the UK. The UK schools offer a diversity of metropolitan and rural locations, price points, age ranges and entry requirements and are united by academic excellence, character development, a global perspective and British values. All Cognita schools are as individual as their students, but all share one common purpose: to create an inspiring world of education.

Academic excellence

Cognita schools provide a uniquely global education that goes beyond examinations and grades to develop all-round academic excellence. Students are equipped with confidence and resourcefulness to prepare them to grow, thrive and find

success in a fast-changing world. The number of A and A*s awarded to Cognita A level students in the UK this year rose to 51% of all grades and the number at C or above rose to 92%. Cognita students have progressed to over half the world's top 100 universities, including Oxford, Cambridge, Columbia, Harvard and Princeton and other Russell Group and Ivy League institutions.

Character Development

Cognita Schools incorporate programmes that build critical life skills and broaden the educational experience of all students. A focus on developing character enables students to understand the broader picture, solve problems creatively, become virtuous leaders, think critically, respect community heritage, be comfortable with

change, develop an understanding of self and an appreciation of others and their communities.

Global Perspectives

Cognita's global family of schools provides a platform for the continual exchange of ideas and school leaders are constantly developing new ways to connect people across the global community. Global school exchanges and joint expeditions enrich students' learning and build global perspectives.

British Values

Cognita's UK schools are rooted in British heritage, history and culture and teach British values.

Age range

2-18

School type

A group of 29 private day schools across the UK, Co-ed

Accommodation

As a day schools' group, most students live with their families. We also have homestay/guardianship options.

Annual tuition fee (GBP)

This varies by year group and location, from £8,400 for a reception year place at Oakleigh House School, Swansea, to £32,160 for an IB Diploma place at Southbank International School in Central London

Courses

Primary, Secondary, GCSE, GCE A-level, IB Diploma, Summer English, ESL Support, Foundation Course

Total number of students

About 10,000 across 29 UK schools

Number of Hong Kong students

25 new Hong Kong students in September 2021, across nine schools

Teacher student ratio

It varies from school to school, but typically 1:20



D'OVERBROECK'S & OXFORD SIXTH FORM COLLEGE



international@doverbroecks.com and
internationaladmissions@oxfordsixthformcollege.com



www.doverbroecks.com
www.oxfordsixthformcollege.com

Location

Oxford, UK

d'Overbroeck's is an independent school in Oxford offering an exceptional academic and extra-curricular programme. Our programmes provide excellent opportunities for individual growth through shared values and an ethos of commitment to each other. Our ethos is firmly built on personal relationships, on a relative lack of stuffiness and formal hierarchies, and on a strong belief that every individual is at the heart of the school. At the same time, our approach is distinctly collaborative. We believe in leading by example, in a healthy dose of flexibility and in the power of laughter and humanity. 'Enthusiasm', 'maturity' and 'courtesy' are words that visitors to the school frequently use to describe us. We

provide an environment which gives both staff and students the space to be themselves as well as the encouragement and stimulus to grow, to learn, to engage with complexity and to achieve their goals. And they'll also have time for friendship, laughter and living life to the full.

Oxford Sixth Form College is a highly successful independent college in the heart of Oxford, specialising in A-Level, BTEC, Foundation and GCSE courses for students aged 15-19. We strongly believe that one size really does not fit all. We have a fantastic track record in helping students to achieve their best, with 61% of students gaining entry to their first-choice university in 2021. Alongside two-year

A-Levels we offer BTEC Business Plus where students study an A-Level alongside their BTEC Business course and a one year A-Level programme. We also offer the NCUK International Foundation Year (IFY), giving students access to over 60 universities worldwide. IFY Pathways include Engineering, Business and Science, which has routes to Medicine.

Age range

11-17

School type

Independent school, Co-ed

Accommodation

Boarding

Annual tuition fee (GBP)

Please refer to our website

Courses

Secondary, GCSE, GCE A-level, BTEC, Summer English, and ESL Support

Total number of students

Please refer to our website

Number of Hong Kong students

Please refer to our website

Teacher student ratio

1: 8-11



INTO UNIVERSITY PARTNERSHIP

 [jutamat.hempunpairoh@intoglobal.com](mailto:jutamathempunpairoh@intoglobal.com)

 www.intostudy.com/en

Location

United Kingdom

Are you interested in studying a degree program in the UK? We have hundreds available, from undergraduate and graduate university pathway programs to face-to-face and online English language courses, all specially tailored for international students. If eligible, you could also apply directly to university degrees in the UK. Explore the options below to find out which route to university is most suitable for you.

With INTO, you'll benefit from modern Study Centres, access to top facilities and specialist university-approved programmes. We'll help you discover your perfect course and university, supporting you all the way on your journey to career success.

Choose your Study Centre

Whether you want to learn in a beautiful campus community or a dynamic city location, we have the perfect study destination for you. Choose from one of our prestigious partner institutions, or start at an INTO Multi-pathway Centre – before moving on to one of 100+ universities across the UK.

Age range

16+

School type

Foundation Programme, International Year One Programme and Graduate Diploma Programme, Co-ed

Accommodation

University accommodation

Annual tuition fee (GBP)

£17,000 - £22,000

Courses

IB Diploma, Access/Foundation course, National Diploma, Higher National Diploma, Summer English, Foundation Degree

Total number of students

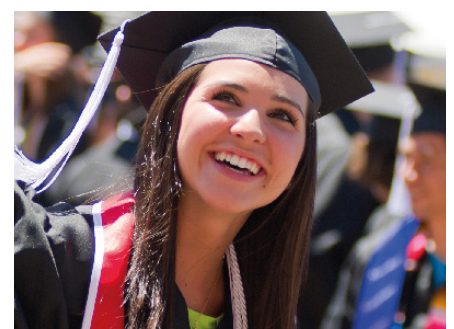
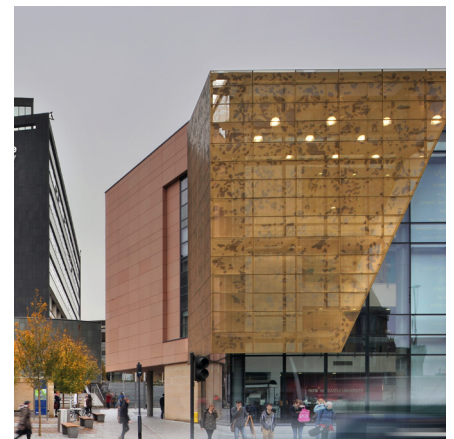
14,000

Number of Hong Kong students

100 per year over 8 centres

Teacher student ratio

16-20





NORWICH SCHOOL

 wcroston@norwich-school.org.uk

 www.norwich-school.org.uk

Location

East of England. 2 Hours from London. 1 hour from Cambridge with its own airport with connections to Asia via Amsterdam.

Norwich School is a co-educational day school with a homestay programme for academically able pupils aged 16+ as well as accepting BNO applications throughout the School. Being a day school, we offer a very British experience to our international pupils. We are a traditional yet lively place, combining a wide range of extra-curricular activities with our core values of academic excellence and mutual respect. Our unique atmosphere develops confidence, warm long-lasting relationships and as importantly a deep appreciation of learning. The School has modern, well-equipped classrooms, laboratories, music school and theatre as well as a sixth form centre and is at the heart of Norwich's ancient Cathedral Close.

We continue to enjoy outstanding academic results at both GCSE and A Level and send pupils to the best universities around the globe and in the UK with around 75% going to Russell Group universities in 2021 with almost 90% going to their first choice university; testimony to the pupils' hard work and to the quality of the teaching staff. Out of the classroom, the School offers a full range of choirs, orchestras, chamber groups and an annual musical as well as a wide range of team and individual sports. There are over 50 different clubs and societies as well as an outstanding programme of community service and a Sixth Form lecture programme.

All these allow our pupils to fulfil their unique potential. Our values are rooted in our beautiful surroundings, the inspirational presence of Norwich Cathedral and our remarkable history of almost 1000 years. International pupils will be part of our unique homestay programme living with carefully selected local families. Homestay will allow your child to experience British family life, become fluent in English and is a stepping stone in their preparation for the greater independence of university life.

Age range

3-18 for those relocating but homestay is only available from 16+

School type

Independent school, Co-ed

Accommodation

Homestay

Annual tuition fee (GBP)

(2021-22): £23,103 per annum (includes academic tuition, term-time school lunches and additional English tuition) plus homestay fees.

Courses

Primary, Secondary, GCSE, GCE A-level

Total number of students

1,100

Number of Hong Kong students

24

Teacher student ratio

1:9





QUEEN ETHELBURGA'S COLLEGIATE

 Jd@qe.org, mbruce@qe.org

 www.qe.org

Location

York

The Collegiate is uniquely made up of four smaller schools, each with its own Head, Deputy Head, and management team. This ensures a nurturing, family atmosphere where the staff know their students thoroughly and form outstanding student-teacher relationships based on mutual respect and unwavering support for each other.

We have established ourselves amongst the top schools worldwide, demonstrated by our outstanding academic results and impressive list of top university destinations. We recognise that the quality of teaching in the classroom is the most critical component in achieving academic

excellence, hence our investment in continuing professional development. This ensures our teachers remain at the top of their profession, and our students are equipped with the skills they will need to become successful adults. We also understand the importance of developing the whole student by presenting opportunities to learn beyond the classroom through our extensive enrichment and super-curricular programmes, designed to recognise and celebrate the skills and aspirations of each individual.

We promote a culture of self-awareness; encouraging and developing individual potential and personal qualities, such as those of leadership, critical thinking, and

responsibility. We believe in placing each student at the centre of their own development and that learning is a life-long process. Our students leave us as resilient, independent, confident and self-aware young adults, proud to have been members of the Collegiate, and ready to take their place in the wider community.

Age range

7-17

School type

Independent school, Co-ed

Accommodation

Boarding

Annual tuition fee (GBP)

£13,850 to £17,456 per Term

Courses

Primary, Secondary, GCSE, GCE A-level, Summer English, ESL Support

Total number of students

1,150

Number of Hong Kong students

98

Teacher student ratio

1:4





TASIS THE AMERICAN SCHOOL IN ENGLAND

ukadmissions@tasisengland.org

www.tasisengland.org

Location

Thorpe, Surrey, UK

TASIS The American School in England provides a truly international learning experience for children aged 3 to 18, and boarders aged 13-18 (Grades 8-12). Our caring teachers are committed to helping each student develop a sense of individuality, realize their full potential, and take pride in who they are as they discover their passion and follow their own pathway.

- Average class size of 10-12 students
- International Baccalaureate (IB) Diploma Programme
- Advanced Placement (AP) courses
- Individualized 4-year university counseling
- Excellent university placement in the UK, US & worldwide
- 60 nationalities & 30 languages spoken on campus

- 35 minutes from central London
- 20 minutes from Heathrow Airport

The TASIS boarding program provides a safe and welcoming home-away-from-home for students, with a wide range of weekend activities that take advantage of our proximity to London and all its cultural delights.

Our impressive academic offerings include Advanced Placement courses developed by the American College Board and the IB Diploma Programme. Both provide well-defined pathways to universities in the US, the UK, or anywhere in the world. A broad range of co-curricular, leadership, and service opportunities round out our students' educational experience. Our spacious 46-acre campus is set in the beautiful Surrey countryside.

The health and safety of our community is our top priority. We have created the most secure environment possible, minimizing risk by upholding our exemplary cleaning standards and implementing many rigorous strategies in accordance with UK government advice.

TASIS England also offers an award winning residential Summer Program for ages 11-17, with on-campus courses in Summer 2022. Our program attracts bright and adventurous students from around the world who will take one major academic course and one elective, complemented by sports, activities, and weekend excursions. We offer two three-week sessions starting in late June and ending in early August.

Age range

Day Students 3-18, Boarding Students 13-18

School type

Independent school, Co-ed

Accommodation

Boarding

Annual tuition fee (GBP)

£48,900

Courses

Primary, Secondary, IB Diploma, Summer English, ESL Support

Total number of students

630

Number of Hong Kong students

2

Teacher student ratio

1:6





WESTBOURNE
SCHOOL

WESTBOURNE SCHOOL

 admissions@westbourneschool.com

 www.westbourneschool.com

Location

Cardiff, Wales

Westbourne School has led the UK-wide League Tables for smaller school results since 2015, been named IB School of the Year, achieved the top grade of 'excellent' in all inspection categories and consistently maintained a 90% graduate-entry rate to top Russell Group and Ivy League universities. Established in 1896, Westbourne develops well-rounded students, equipped with the skills, knowledge, confidence and character to become leaders of the future in their chosen field.

Set in a unique location, just ten minutes from Cardiff, with world-class sporting facilities alongside signature programmes to develop leadership ability, critical thinking skills, public speaking and Oxbridge preparation.

Offering individualised academic excellence, Westbourne has a warm and highly supportive culture. Small class

sizes, an 8:1 pupil-to-teacher ratio and a tutorial style ensures every student excels. More than 50% of teachers at Westbourne have a PhD or Masters and more than 50% have taught internationally, so can quickly relate with local and international students alike.

Gold standard programmes

IB Diploma: Internationally recognized and widely respected for its breadth of programme. In 2021, 50% of candidates achieved over 40 points, with 85% attaining 7/6 (A*/A equivalent) and 96.8% 7-5 (A*-B). Westbourne's average IB Point score of 39 places the school within the top 25 IB schools worldwide.* 38 IB points is the minimum entry-level to Oxbridge.

GCSE/IGCSE: Full course and 1 year GCSE/IGCSE programmes: in 2020, 86% of GCSE grades were A*-A equivalent (9-7).

Pre-IB: One year, Pre-Diploma foundation course for international students, specifically designed for 15-16 year olds.

Boarding environment

Located in the safe seaside town of Penarth, ranked as one of the Top 10 best places to live in the UK, also just minutes from the vibrant capital city of Cardiff, Westbourne is a resoundingly British school. A student body of mainly

British students, complemented by European and Asian students drawn from around 24 different countries; no one nationality dominates.

Boarding students live within 2 minutes-walk of the main school building, in a modern fully-equipped boarding house, supported by live in, caring and professional house parents.

Age range

2-18 (11-18 for boarders)

School type

Independent school, Co-ed

Accommodation

Boarding and Homestay

Annual tuition fee (GBP)

£37,950 for accommodation in Boarding House, £35,850 for accommodation in Home Stay. We offer partial academic scholarships and financial aid.

Courses

Primary, Secondary, GCSE, GCE A-level, PreIB/1 year GCSE

Total number of students

350

Number of Hong Kong students

16

Teacher student ratio

1:8



STUDY UK

Search **Study UK**     

